



Manufacturing Facility @Alandi, Markal, Pune (50,000 Sq. Ft.)



Amol Gajare
Director



Dhananjay Dughad
Director - EC & Legal Division

ABOUT US

Welcome to Enversys Greentek Solutions, a leading manufacturing & consultancy firm based in Pune, serving all over India. With a team boasting extensive expertise in industrial pollution control and statutory compliance, we pride ourselves on being a highly competent organization and your one-stop solution for all industrial pollution abatement needs. Our experts bring diverse experience in designing treatment plants Tailored to different industries. At the same time, our pool of competent staff, including Process Design Engineers, Project Commissioning Engineers, Chemists, Operators, and Administrators, ensures seamless project execution.

Over the years, we have completed numerous pollution control projects, encompassing the design, installation, and commissioning of cutting-edge wastewater treatment plants and state-of-the-art air pollution control equipment. Beyond this, we go the extra mile by handling the manufacturing, Operation, and maintenance contracts for the UFRP, WTP, STP, ETP & ZLD

Biogas plants, composting devices for organic waste, and zero discharge plants. Our commitment extends further with dedicated support throughout the entire operational lifecycle of projects and products.

Furthermore, we specialize in Environmental Consultancy Services, providing expertise in EC, EIA, EMP, CEMP, LEED, IGBC & GRIHA certifications, as well as conducting Carbon footprint studies, LCA assessments, and Green Audits.

OUR VISION & MISSION



To become global leader in water, Wastewater engineering and pollution Abatement services



To provide an innovative solution for pollution control



To achieve and maintain customer satisfaction by providing reliable, innovative, and compliant solutions.



To provide economic and affordable Solutions for pollution control



To improve environment and ensure Pollution prevention while taking Care of business



To provide reliable, trustworthy Solutions for pollution control



Our Achievements

500+

Satisfied Clients

350+

Projects Completed

15+

Presence in State's

50+

Site under
O&M

21+

MLD of water
being recycled
everyday

11+

Years of
Experience

21+

Types of Industries
Served

enversys
Lets make it a greenverse!



ENVIRONMENT SERVICES

- Facilitate and Obtaining Environmental Clearances for All Applicable Projects
- Environmental Impact Assessment (EIA) Studies
- Coastal Regulation Zone (CRZ) Clearances
- Forest Clearances
- Post-Environmental Clearance Compliances
- Certified Compliance Reports from the Regional Office of MoEF&CC
- Preparation of Environmental Management Plan (EMP)
- Preparation of Construction Environmental Management Plan (CEMP)
- Environmental and Social Due Diligence
- Environmental Due Diligence (Phase I & Phase II)
- Environmental Site Auditing and Green Audits
- Environmental Remediation Assessment
- Preparation of Environmental Statement & Compliance Reports
- No Increase in Pollution Load Certification
- Solid Waste Management Plan Preparation
- Disaster Management Plan Preparation

SUSTAINABILITY SERVICES

- EGS & Sustainability Reporting as per International Standards (GRI, SASB, TCFD, CDP, etc.) & Preparation of Business Responsibility and Sustainability Reporting (BRSR)
- Life Cycle Assessment (LCA) of products and services (Cradle to Gate/Grave) and EPD Certification
- Green Building Certification & Compliance (LEED, IGBC, Eco Housing and GRIHA etc.)
- GHG Accounting and Reporting
- Carbon Border Adjustment Mechanism (CBAM)
- Net Zero Strategies, SBTi Target Setting & Advisory
- ESG/Sustainability Policies & Frameworks development
- Building Performance Simulation
- Energy Audit, Water Audit and Sustainability Report

NABL & MoEF LABORATORY

- Environmental Monitoring - Air, Soil, Water & Wastewater Monitoring Services
- Climate Research Lab – GHG Monitoring & Analysis

CONSENT MANAGEMENT AND COMPLIANCES

- Consent to Establish and Consent to Operate from SPCB
- Product mix under No Increase in Pollution Load (NIPL)
- Environment Statement (Form V)
- Hazardous Waste Return (Form IV)
- EPR Approval for All Business
- Amendment in Consent
- E-Waste Annual Return Form - III
- Half Yearly Battery Waste Return Form - VIII
- Hazardous Waste Authorization

OTHER LEGAL COMPLIANCE SERVICES

- CGWA NOC for Ground Water
- DISH - Factory Plan Approval
- Factory License Approval & Renewal
- PESO - Plan Approval
- PESO License for Storage
- Fire Safety NOC Service

WE SERVE



AUTOMOBILE



CEMENT



CHEMICAL &
PHARMACEUTICAL



HOSPITAL



MUNCIPAL
CORPORATION



PAINT



PAPER &
PULP

PRODUCTS

WATER TREATMENT PLANT

- Ultrafiltration Plant (UF)
- Reverse Osmosis Plant (RO)
- Water Treatment Plant (WTP)
- Water Softening Plant / Water Softeners
- Demineralization Plant (DM)

WASTE WATER TREATMENT

- Waste water UF & RO
- Sewage Treatment Plant
- Effluent Treatment Plant
- Single & multiple effect Evaporators
- Mechanical Vapor Recompression (MVR) Evaporator
- Agitated Thin Film Dryer (ATFD)
- Dissolved Air Flotation (DAF)
- Dewatering Equipment – Filter Press, Screw Press, Decaners, Centrifuge

AIR POLLUTION CONTROL EQUIPMENT'S

- Wet Scrubbers
- Dust Collectors
- Bag Filters
- Cyclone Filters
- Fume Extractors

OTHER PRODUCTS

- Organic Waste Converter Machines (OWC)
- Water & Waste Water Treatment Equipment
- Online Continuous Emission Monitoring System
- Spare & chemicals
- Rainwater Harvesting Systems
- Water & Waste Water Treatment Chemicals & Consumables

WE SERVE



RESIDENTIAL &
COMMERCIAL
PROJECTS



STEEL &
POWER



EPC



FOOD &
BIOTECH



REFINERY &
PETROCHEMICAL



RUBBER



SUGAR &
DISTILLERY



TEXTILE

SEWAGE TREATMENT PLANT – STP

Sewage treatment is a type of wastewater treatment which aims to remove contaminants from sewage to produce an effluent that is suitable to discharge to the surrounding environment or an intended reuse application, thereby preventing water pollution from raw sewage discharges. At Enversys Greentek Solutions, we provide advanced Sewage Treatment Plants (STPs) that ensure efficient treatment of domestic and industrial wastewater. Our STPs help clients comply with environmental regulations, reduce pollution, and contribute to sustainable water reuse.

- Prefabricated / Modular
- Automatic/ Semiautomatic
- Portable
- Packaged modular STPs
- Advanced underground and constructed-systems — designed to fit seamlessly into your space with a minimal footprint



Marathwada Mitra Mandal's Institute of Technology, Pune - 200 KLD - STP MBBR



MBBR
(Moving Bed Biofilm Reactor)



MBR
(Membrane Bioreactor)



SBR
(Sequential Batch Reactor)



FSTP
(Faecal Sludge Treatment Plant)

EFFLUENT TREATMENT PLANT – ETP

At Enversys Greentek Solutions, we design and deliver compact, eco-friendly, and cost-effective ETPs customized to meet your space and operational needs. Our advanced systems ensure regulatory compliance, sustainable water management, and safe effluent treatment across industries. Featuring aesthetic, fully enclosed designs, innovative biological and chemical treatment technologies, and user-friendly operation and maintenance, our ETPs are built for performance and practicality.

Our ETPs are available in:

- Prefabricated Units
- Portable ETPs
- Modular Packaged Plants
- Underground & Constructed ETPs

With fully enclosed, aesthetic designs, our systems combine high efficiency with visual appeal while ensuring safe and effective effluent treatment. We also offer innovative biological and chemical treatment technologies, delivering cost-effective and sustainable wastewater solutions.



Enzene Biosciences Limited Chakan, Pune ETP- 20 KLD – ETP STP UASBR



ASP
(Activated Sludge Process)



EA
(Extended Aeration System)



UASB
(Upflow Anaerobic Sludge
Blanket Reactor)



AF
(Anaerobic Filter)

ZERO LIQUID DISCHARGE – ZLD

Zero Liquid Discharge (ZLD) is an advanced wastewater recycling process designed to eliminate liquid waste discharge from industrial facilities. It integrates cutting-edge technologies like evaporation, crystallization, and drying to treat effluents, recover reusable clean water, and concentrate solid residues for safe disposal or reuse. ZLD not only reduces environmental impact but also promotes water conservation and resource recovery.

Benefits of Zero Liquid Discharge (ZLD) Systems

- Reducing the cost of production
- Water Conservation
- Reduced Disposal Costs
- Environmental Sustainability
- Decrease the Volume of waste
- Recycling of treated water
- Legal compliance of industries

Type of Evaporators

- Single Effect Evaporators
- Multi Effect Evaporator
- Forced Circulation Evaporator
- Falling Film Evaporator
- Agitated Thin Film Evaporator
- Zero Liquid Discharge Plant
- Mechanical Vapor Recompression (MVR)



Hikal Ltd, Pune - 30 KLD - ETP STP UFRO MVR ATFD

Multi-Effect Evaporator (MEE)

A series of evaporators where the vapor from one effect serves as the heating medium for the next effect, operating at successively lower pressures and temperatures. This significantly improves energy efficiency.

- **Advantages:** High energy efficiency, reduced steam consumption, lower operating costs for large-scale operations.
- **Utilized in:** Large-scale concentration of various critical effluents in industries like Pharma, Biotech, food processing (e.g., sugar, juice, milk), chemicals, and pulp & paper.

Mechanical Vapor Recompression (MVR) Evaporator

A type of evaporator where the vapor produced is compressed mechanically (increasing its pressure and temperature) and then reused as the heating medium for the same evaporator. This drastically reduces external steam requirements.

- **Advantages:** Very high energy efficiency, minimal external steam needed, reduced cooling water requirements, lower operating costs.
- **Utilized in:** Concentration of various critical effluents in industries (e.g., milk, whey), fruit juices, sugar solutions, and in desalination and wastewater treatment where energy savings are critical.

Agitated Thin Film Dryer (ATFD)

A dryer where a thin film of liquid is spread on a heated surface by rotating wipers or rollers. Rapid heat transfer and short residence time allow for the drying of heat-sensitive and viscous materials.

- **Advantages:** Short residence time minimizes thermal degradation, handles viscous and fouling liquids effectively, continuous operation, high heat transfer rates.
- **Utilized in:** Drying of concentrate from evaporator of pharmaceuticals, food extracts, polymers, chemicals, and recovery of valuable solids from slurries.



Shogini Technoarts Pvt Ltd, Shivapur khed, Pune - 40 KLD - MEE+ATFD

ORGANIC WASTE COMPOSTER

EGS Organic Waste Composter machines are designed to reduce landfill waste and promote eco friendly composting, our OWC is a must-have for sustainable waste management. This fully automated, energy-efficient solution transforms organic waste into nutrient-rich compost with zero odour and minimal effort. Equipped with intelligent temperature, airflow, and moisture control, it ensures fast and efficient decomposition, making it an essential tool for a cleaner and greener planet. Turn waste into valuable resources – because sustainability starts with smart choices!

KEY FEATURES



**Power Saving
Function**



**Noiseless &
odorless**



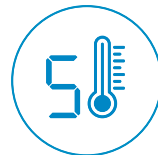
**Process all types of
organic waste**



**Compact, Fully
Covered Outer Body**



**Emergency Stop
Button**



**Digital Temperature
Display**

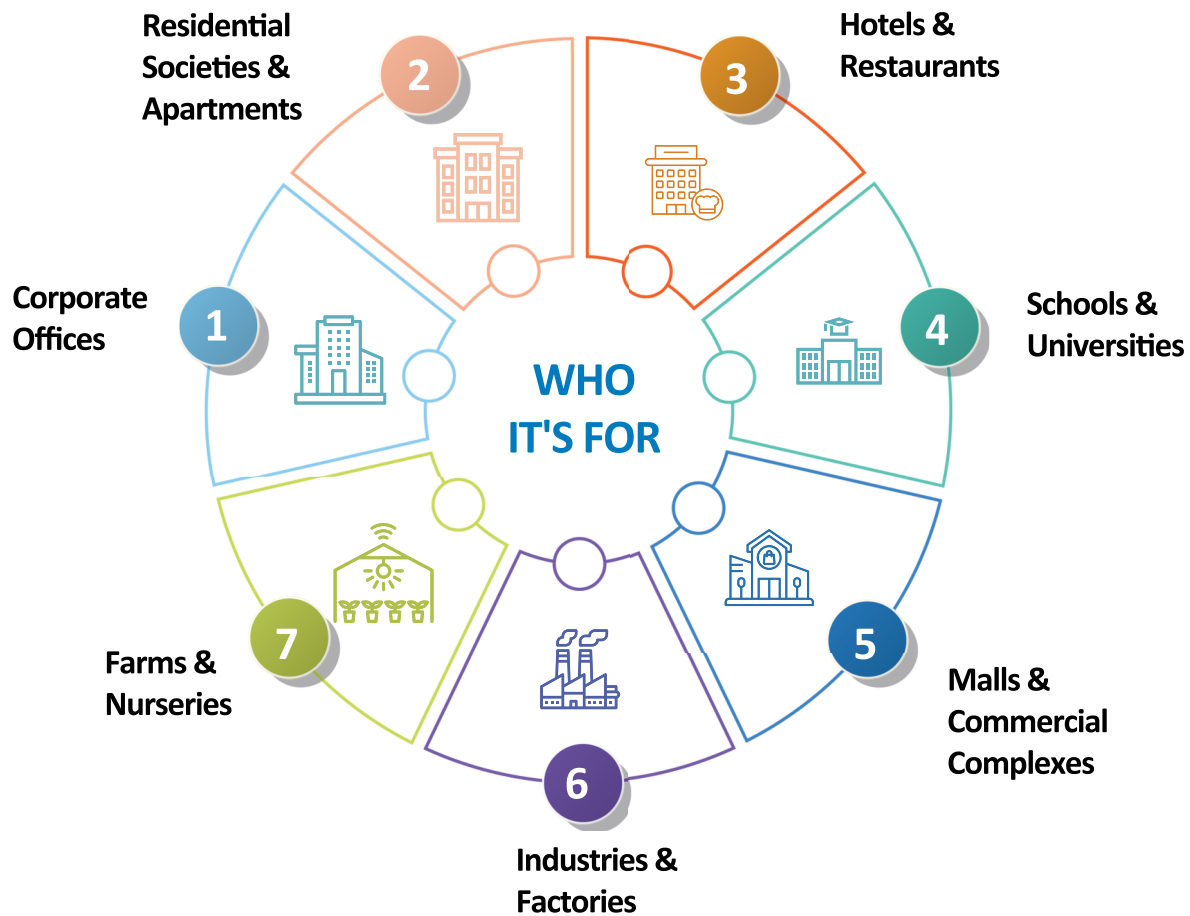


We provide OWC machines models ranging from 25 Kg/Day to 2000 Kg/Day Capacities. Customized according to client needs.

ORGANIC WASTE CONVERTER – OWC

These composting systems are suitable for the on-site processing of :

- All types of vegetable & fruit waste.
- Cooked & uncooked food waste.
- Used flowers & garden waste.
- Any other type of biodegradable waste



EGS DRUM COMPOSTER



EGS BATCH COMPOSTER



EGS EXPRESS COMPOSTER

WATER TREATMENT PRODUCTS

Water treatment is any process that improves the quality of water to make it appropriate for a specific end-use. We Enversys-Greentek Solutions, we specialize in cutting-edge water purification technologies to ensure safe, clean, and sustainable water solutions. Our WaterTreatment products are designed to meet the needs of industries, businesses, and residents. We expertise in removes contaminants and undesirable components, or reduces their concentration so that the water becomes fit for its desired end-use.

Water Treatment Plants (WTP)

Water Treatment Plants are designed to purify and treat raw water, making it suitable for drinking, industrial, or process use. These systems efficiently remove impurities, suspended solids, organic matter, and harmful contaminants to meet regulatory water quality standards. Our customized solutions ensure high efficiency and reliability for diverse applications.

- Customized to meet specific water quality needs
- Removes impurities, suspended solids & contaminants.
- Ensure regulatory standards



Ultrafiltration (UF)

Ultrafiltration (UF) is an advanced membrane filtration process that removes bacteria, viruses, and suspended solids from water. It serves as an excellent pre-treatment before Reverse Osmosis (RO) and is widely used in industrial water purification, wastewater treatment, and drinking water applications. UF membranes provide superior filtration while maintaining essential minerals in the water.

- Advanced membrane filtration technology
- Removes bacteria, viruses & suspended solids
- Ideal for pre-treatment before RO systems



Reverse Osmosis (RO)

Reverse Osmosis (RO) is a highly effective water purification technology that removes dissolved salts, heavy metals, bacteria, and other contaminants. By applying high pressure, RO systems force water through a semi-permeable membrane, ensuring the delivery of high-purity water suitable for industrial, commercial, and domestic applications.

- High-purity water for industrial & commercial use
- Removes dissolved salts, heavy metals & bacteria
- Energy-efficient, cost-effective & easy to operate



AIR POLLUTION CONTROL EQUIPMENT

At Enversys Greentek Solutions, we are committed to reducing industrial air pollution with cutting-edge filtration and scrubbing solutions. Our advanced air pollution control systems ensure cleaner emissions, improved air quality, and compliance with environmental standards, helping industries move towards a greener and more sustainable future.



Wet Scrubbers & Flue Gas Scrubbers

Our Wet Scrubbers and Flue Gas Scrubbers are designed to efficiently capture and neutralize harmful pollutants, ensuring cleaner emissions and compliance with environmental standards. These systems use intelligent airflow, moisture control, and automated processes to remove dust, gases, and chemical contaminants from industrial exhaust. With power-saving functions, compact designs, and noiseless operation, they offer a reliable and eco-friendly solution for air pollution control across various industries.

Fume Extractors

We specialize in providing fume extraction systems for various industries. Fume extraction systems are designed to remove harmful fumes, smoke, and other pollutants that are generated during industrial processes. These systems are essential for ensuring worker safety and maintaining air quality in the workplace.



Bag Filter

Our Baghouse Filters provide superior air filtration, capturing and removing dust and particulate matter from industrial air streams. Designed for maximum efficiency, they help industries achieve cleaner emissions, regulatory compliance, and enhanced operational performance. With advanced filtration technology, these systems ensure a safer workplace and a greener future.

Dust Collectors

At Enversys, we provide high-performance dust extraction systems tailored to meet your specific needs. Our machines are designed to provide best filtration efficiencies together with low energy consumption and optimised filter life. Optional second stage HEPA filter can be configured our dust collector machines in order to recirculate the cleaned process exhaust air back in to the industry.

- Effective Dust Filtration – Removes airborne particles for a cleaner environment.
- Enhances Workplace Safety – Reduces health risks and fire hazards.
- Boosts Equipment Efficiency – Prevents dust buildup, extending machinery life.
- Ensures Compliance – Meets environmental and industrial air quality standards.
- Energy-Efficient & Reliable – Designed for long-term, low-maintenance operation.



WTP DM UF & RO



Indospace, Pune (WTP)



Amber Enterprises, Chennai (DM, UF, RO)



Ever electronics, Chennai (UF,RO)



Epack Polymer PVT LTD, Dahej (UF, RO)

STP



Marathwada Mitra Mandal's Insitute of Technology, Pune (STP)



Norma Group Products India PVT LTD, Pune (STP)



International Automotive Components, Pune (MBR, STP)



Luthra Group, Ahmednagar, Under Ground (STP)

ETP



Kalyani Techno Forge LTD (ETP + STP)



Amber Enterprises Ahmednagar(ETP, UF, RO)



Oval Projects Engineering Pvt Ltd, Assam (ETP)



L&T Construction, Mumbai (ETP)

ZLD



Jabil Manufacturing India PVT LTD, Pune (ZLD)



Centaur Pharmaceuticals PVT LTD, Pune (ZLD)



Hikal ltd (MVR, ZLD)



Shogini Technoarts PVT LTD, Pune (MEE + ATFD)

OUR CLIENTS



Registered Office

406, Greens Centre, Opp.
Pudumjee Paper Mills, Thergaon,
Pune 411033.

+91 9850600099

Manufacturing Plant

Gat No.1232/1, 1232/2, Tal, off
Alandi-Markal Road, Markal, Khed,
Maharashtra 412105

+91 8956532095

Kalyan

201, Sahara Buidcon,
Gautam Society, Opp ICICI Bank,
Khadak Pada, Kalyan (W) 421301

+91 9850864141

Chh. Sambhaji Nagar

Office No-161, First Floor, GCC,
Golden City Center, Beside Prozone Mall,
Chh. Sambhaji Nagar, Maharashtra 431001.

+91 8600397663